

Products

Electronic Control Products:

- Membrane switches
- PiezoPanel®
- Elastomeric keypads
- Capacitive switches
- Touchscreens

Design Options: injection molded plastics, machined back panels, zinc & aluminum castings, vandal proof keypads, force sensing resistors, backlighting, printed circuit boards, flexible printed circuits

Medical Contract Manufacturing:

- Monitoring devices
- Diagnostic devices
- Therapeutic devices
- Class II medical devices

Design Options: conductive inks & medically approved substrates, hydrogel-based sensors developed by Wilson-Hurd for leading edge medical device owners

Printed Electronics:

- Printed, chemically etched, or laser etched traces
- Printing of conductive inks, coatings & plating
- Various substrate material choices including polyester, polycarbonate, polyimide, & FR-4

Nameplates & Dials, Overlays, Panels:

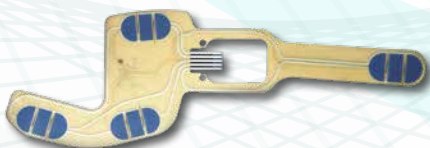
- Metal & plastic nameplates & dials
- Plastic overlays
- Fabricated panels

Design Options: domed nameplates, embossing, selective texturing, colored LED windows, hard-coating

Point-of-Purchase Displays:

- Illuminated displays & overlays
- Counter displays
- Logo plates & components
- Graphic overlays
- Cosmetic appliqués
- Signage

Design Options: custom color matching of any color including reflected & transparent, variety of materials & specialty inks, electronics incorporated into displays (LED lighting, custom lighting designs with in-house soldering of LEDs, motion sensors, turntables, & video monitors)



Printed Electronics



PiezoPanel®



Elastomeric Keypad



Acrylic Bottle Glorifier with LEDs

Manufacturing, Fabrication, & Printing Capabilities

Manufacturing:

- Flexible manufacturing processes
- Cellular manufacturing
- Equipment & tool development
- Rapid prototyping
- Comprehensive list of supply chain partners for any materials or processing needs

Fabrication:

- **Capabilities:** turrets, shears, laser-cutting, die-cutting, hole-punching, lamination, forming, folding, embossing, debossing, selective doming, coining
- **In-house materials:** aluminum, acrylic, brass, stainless steel, cold-rolled steel, vinyl, polycarbonate, polyester
- **Aluminum finishes:** brushed, satin, brite, cosmetic brite, linen, mill
 - All finishes available in glossy, matte, & semi-gloss
 - Finish can be matched to any custom color
- Aluminum coils available for custom sheet coil cutting

Printing:

- **Capabilities:** roller coating, litho printing, screen printing, large format digital flatbed printing
- **Specialty inks:** metallic, mirror, ever-changing, pearlescent, sparkle, thixotropic, krinkle, translucent, transparent backlit, textures, chalkboard, dry-erase, phosphorescence
- **Selective hard coats:** soft touch, screened adhesives
- Graphics & prepress capabilities
- Full service color lab using solvent & UV based chemistries
 - Custom color matching of any color including reflected or transparent colors
 - Test capabilities for flexibility, hardness, solvent, & UV resistance

Quality:

- Wausau Electronic Control Products plant & Berlin Metal & Plastic plant both certified to ISO 9001:2008
- Berlin Advanced Technology Facility certified to ISO 13485
- Class 10K and Class 100K capable manufacturing environment
- Medical Contract Manufacturing division utilizes FDA compliant quality records system & environmentally controlled warehouse



Plastic Overlay



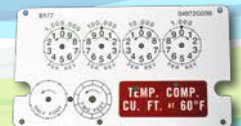
Disposable Medical Device



LED Backlit Sign



Membrane Switch



Metal Nameplate

